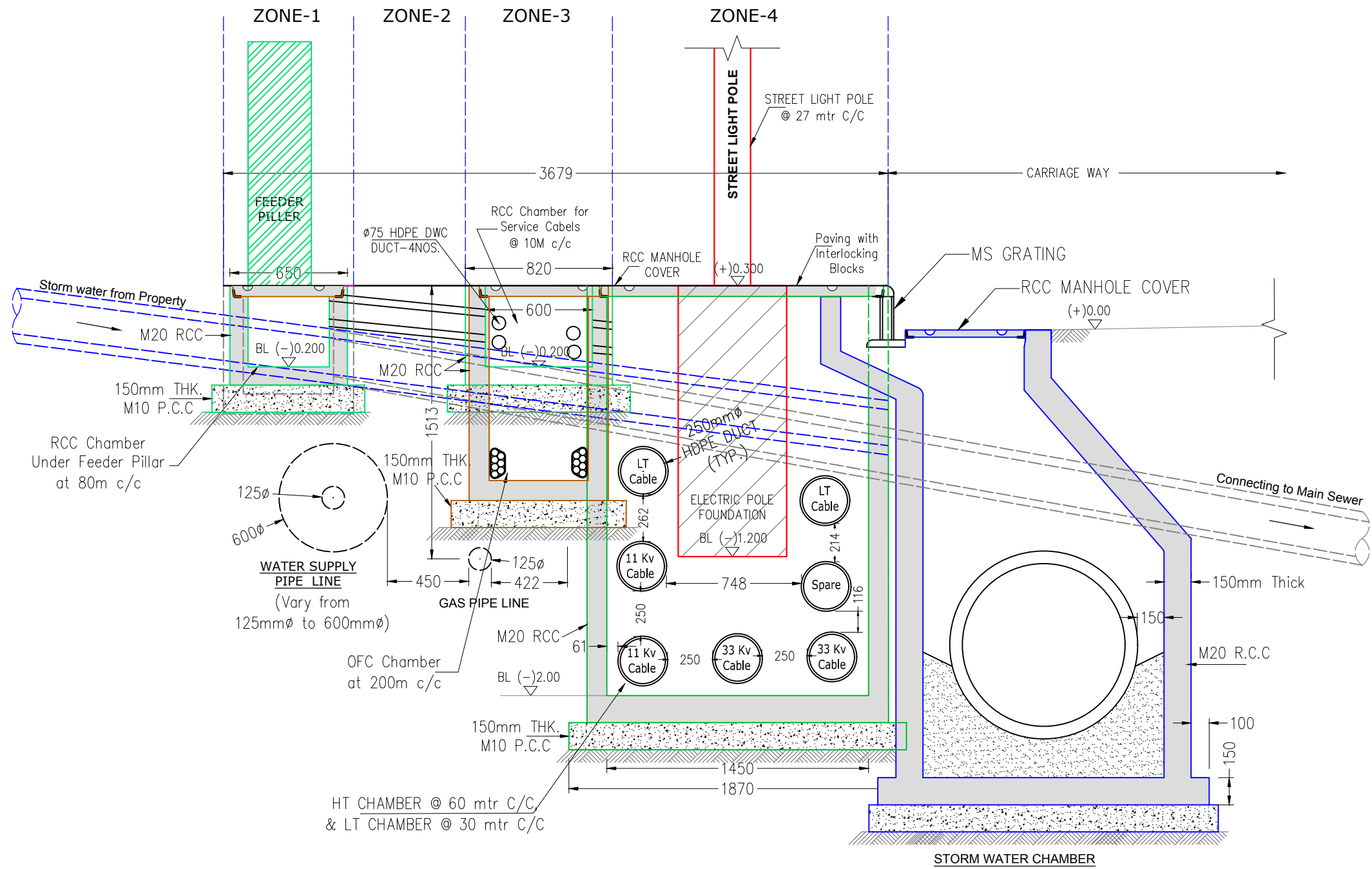


- NOTES:**
1. ALL DIMENSIONS ARE IN MILLIMETERS UNLESS OTHERWISE MENTIONED.
 2. IN ZONE-1 :- THERE SHALL BE A SERIES OF CHAMBER OF FEEDER PILLAR BOX & WATER SUPPLY PIPE LINE.
 3. ZONE-2 :- WILL HAVE GAS PIPE LINE AND SERIES OF CHAMBERS OF SERVICE CABELS (ELECTRICALS) AND OPTICAL FIBER CABLES.
 4. ZONE-3 :- WILL CONSISTS A SERIES OF HT (11KV/33KV), LT CHAMBERS AND POLE FOUNDATIONS.
 5. ALL MANHOLES AND CHAMBERS ARE IN RCC M-20 GRADE.
 6. STEEL IN RCC SHALL BE HYSD-FE 415 TESTED TOR STEEL.
 7. ALL O.F.C AND ELECTRICAL CABLE DUCTS i/e (HT / LT AND SERVICE CABLE DUCTS) SHALL BE OF HDPE MATERIAL.



PROJECT ROAD RECONSTRUCTION AND UNDER GROUND INFRASTRUCTURE DEVELOPMENT				
OWNER UJJAIN SMART CITY LIMITED (USCL), UJJAIN				
PROJECT DEVELOPEMENT MANAGEMENT CONSULTANT (PDMC) ROOM NO. 11, MELA OFFICE, KOTHI ROAD, UJJAIN, MP				
<div style="display: flex; justify-content: space-between;"> <div style="border: 1px solid black; padding: 2px;"> </div> <div> <p>IPG GLOBAL LIMITED. (LEAD CONSULTANT)</p> <p>PWC CONSULTANT (ASSOCIATES CONSULTANT)</p> </div> </div>				
SUB: INFRASTRUCTURE DEVELOPMENT				
TITLE: TYPICAL C/S OF SUB-SURFACE INFRASTRUCTURE DETAILS WITH HDPE DUCT PROVISIONS FOR 18M WIDE ROADS				
DATE	DEALT	CHECKED	APPROVED	SCALE
APPROVED BY: _____			ISSUED BY: _____	
DATE : _____			DATE : _____	
DRG NO: PDMC/ABD/INFRA./CS/18m/08				