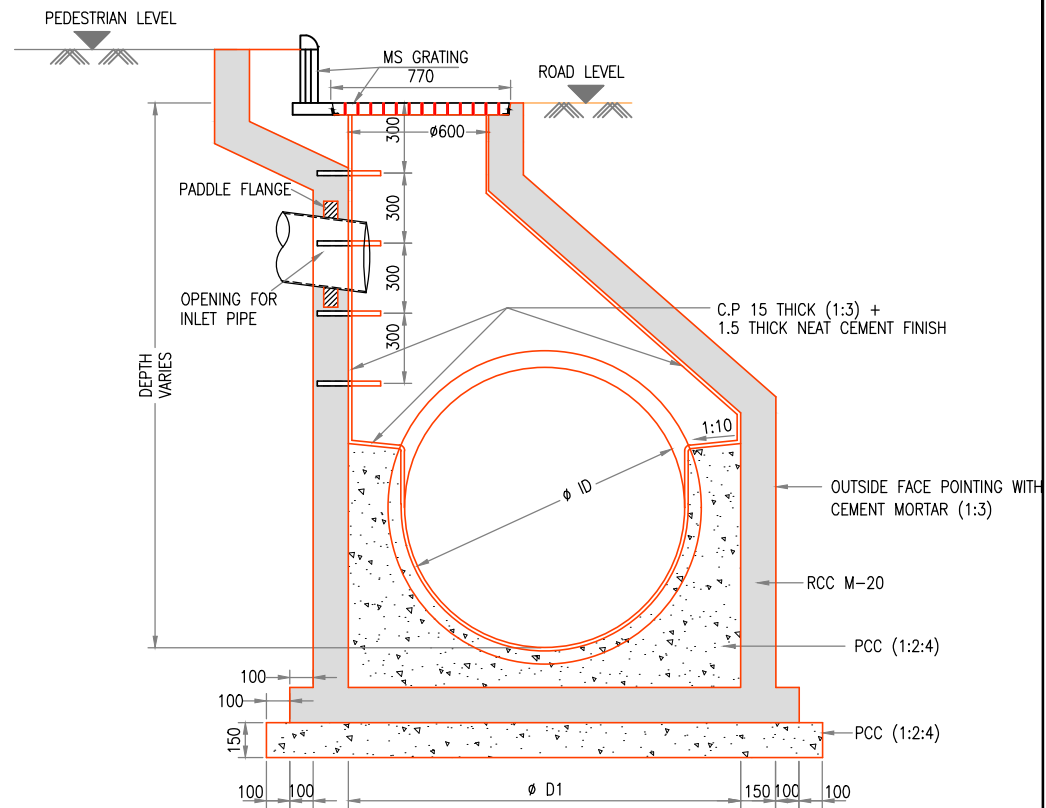
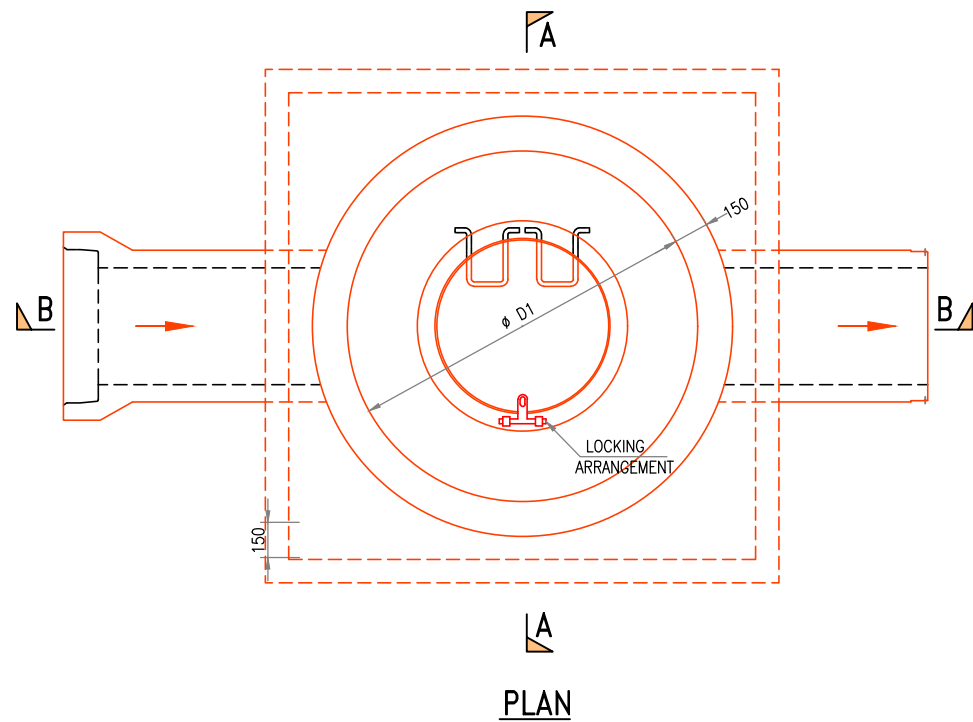


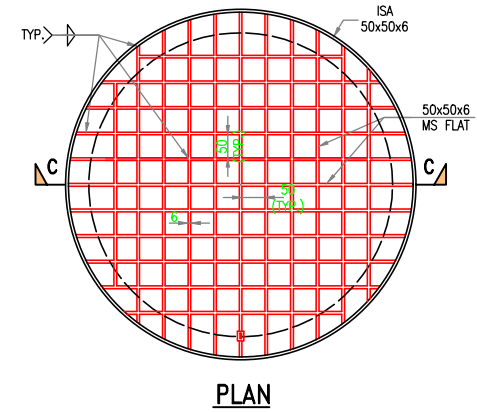
SECTION B-B



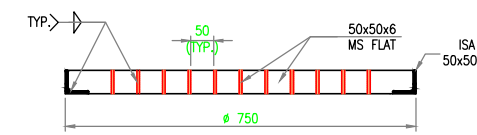
SECTION A-A



PLAN



PLAN



SECTION C-C

**NOTES:**

1. ALL DIMENSIONS ARE IN MILLIMETERS UNLESS OTHERWISE MENTIONED.
2. ALL MANHOLES ARE RCC MATERIAL WITH M-20 GRADE.
3. STEEL REINFORCEMENT SHALL BE HYSD TESTED FOR STEEL.

**PIPE INVERT DEPTH UP TO 1.2M**

SL. NO.	MANHOLE TYPE	MAX. PIPE ID (mm)	Ø D1 (mm)
1.	A	600	1300

**PIPE INVERT DEPTH UP TO 2M.**

SL. NO.	MH TYPE	MAX. PIPE Ø mm.	Ø D1 (mm)
1.	B1	600	1300
2.	B2	900	1700
3.	B3	1200	2000

**PIPE INVERT DEPTH UP TO 4M.**

SL. NO.	MH TYPE	MAX. PIPE Ø mm.	Ø D1 (mm)
1.	C1	600	1300
2.	C2	900	1700
3.	C3	1200	2000
4.	C4	1400	2300
5.	C5	1600	2500

**PROJECT**  
ROAD RECONSTRUCTION AND UNDER GROUND INFRASTRUCTURE DEVELOPMENT

**OWNER**  
UJJAIN SMART CITY LIMITED (USCL), UJJAIN

**PROJECT DEVELOPEMENT MANAGEMENT CONSULTANT (PDMC)**  
ROOM NO. 11, MELA OFFICE, KOTHI ROAD, UJJAIN, MP

**IPG GLOBAL** IPE GLOBAL LIMITED. (LEAD CONSULTANT)

**pwc** PWC CONSULTANT (ASSOCIATES CONSULTANT)

**SUB:** INFRASTRUCTURE DEVELOPMENT

**TITLE:** TYPICAL GA OF STORM WATER CHAMBER WITH MS GRATING

DATE	DEALT	CHECKED	APPROVED	SCALE

**APPROVED BY:** \_\_\_\_\_ **ISSUED BY:** \_\_\_\_\_  
**DATE :** \_\_\_\_\_ **DATE :** \_\_\_\_\_

**DRG NO:** PDMC/ABD/INFRA./TYP.GA/15B